

StrataST

StrataST

STRAIGHT LINE CARTON CONVERTING

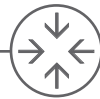
Straight Line Carton Converting System

Introducing the revolutionary StrataST—a game-changing folding and gluing machine designed for carton production—redefining efficiency in the packaging industry. This system will convert a straight line or tuck-bottom carton, with an integrated 3ft compression delivery, capable of operating at belt speeds up to 590ft/minute.

OVERVIEW

Strata's robust design is compact in size but massive in output capacity. It's designed for easy set-up and make-ready utilizing screw drive adjustment. The superior belt fold design applies crisp folds on a range of substrate thicknesses. A heavy-duty compression unit applies consistent pressure to ensure flattening of the cartons and setting of the glue.

KEY FEATURES



Space saving
with its
small footprint



Rotating
touchscreen
monitor controls
functions



Independent
speed control
for each section
of the machine



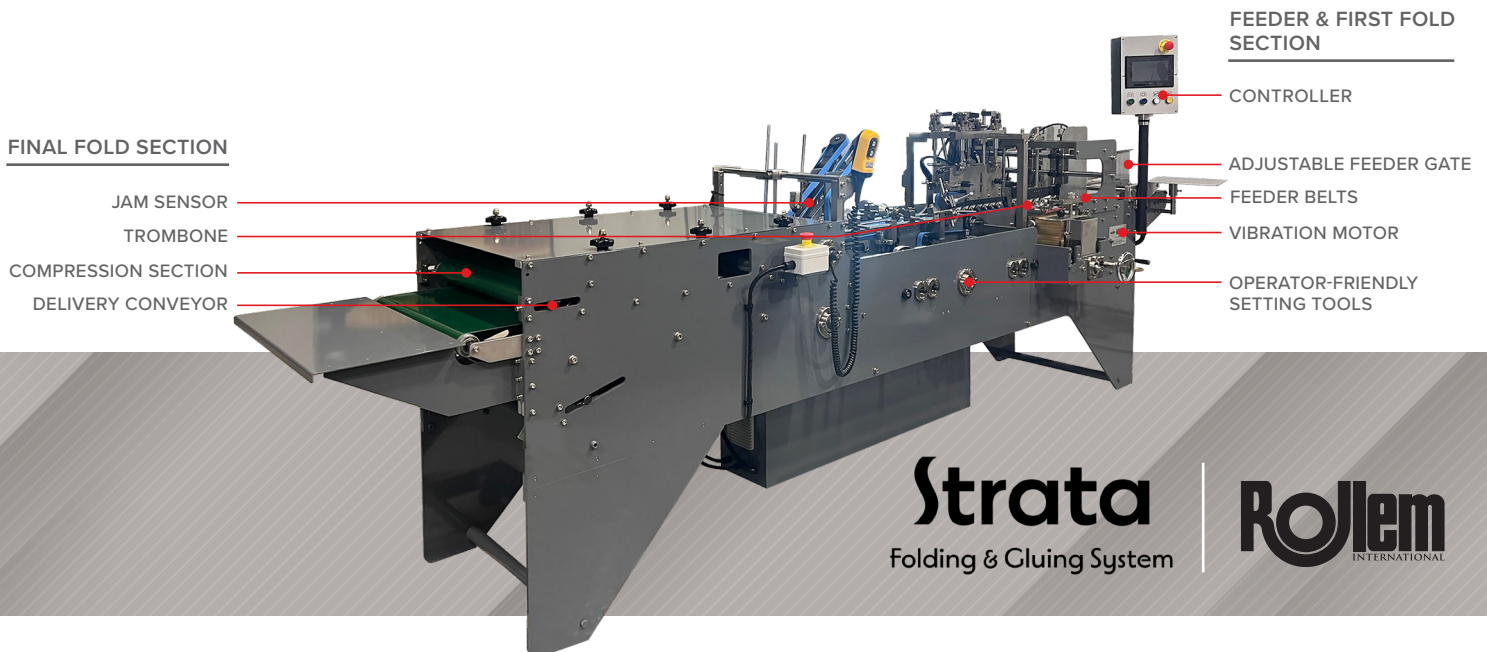
Piece count,
batch count and
batch kicking



Quick & simple
job changeovers
with screw drive
adjustment

UNIQUE DESIGN

- High volume feeder with low blank stack alarm
- Machine speed auto-adjustment
- High resolution feeder vibrator ensures consistent product feeding
- First fold + final fold belt sections
- Trombone delivery directly into 3ft compression unit



Strata
Folding & Gluing System

ROLLEM
INTERNATIONAL

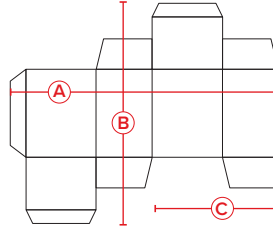
HOT MELT GMS GLUE APPLICATION SYSTEM

StrataST is supplied with a 4-channel stand-alone controller, a 25lb capacity GMS HM25 hot melt glue tank and three GMS hot melt heated glue heads and hoses as well as all necessary mounting bracketry and encoder hardware.

TECHNICAL CARTON DIMENSIONS

Straight Line Min/Max Dimensions:

- A** Width: 70–420mm / 2.7–16.5 inches
- B** Length: 60–300mm / 2.4–11.8 inches
- C** Depth: 25–140mm / 5.5 inches



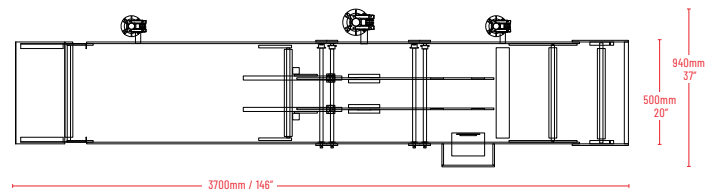
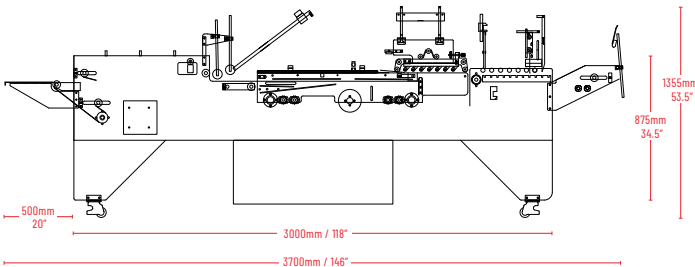
STRATA ST TECHNICAL SPECIFICATIONS

Electrical	208–230V, 3-phase, 60Hz 30amp power line for the fold/glue unit Additional 208–230V, 1-phase, 60Hz 20amp line required for hot melt glue unit
Air	Only required for cross-folding applications
Dimensions	12.2ft long x 3.1ft wide x 3.8ft tall
Material Thickness	200–600GSM / 8pt–24pt
Speeds	Up to 590ft/minute
Weight	1,450 lbs (uncrated)

VALUE PROPOSITION

StrataST is a space-saving system that packs powerhouse performance into an industry-first ultra-compact footprint. With an economical price point and when paired with an Insignia Die-Cutting system, printers are readily equipped to serve the expanding packaging market.

In your evaluation of the Strata finishing system, consider important factors such as quick changeover time and quality of construction, as well as the ever-important service after completion of the sale. Upon final review, we are confident you will understand why Rollem has been a service leader for over 50 years.



Strata
Folding & Gluing System

Rollem
INTERNATIONAL

800.272.4381
rollemusa.com

